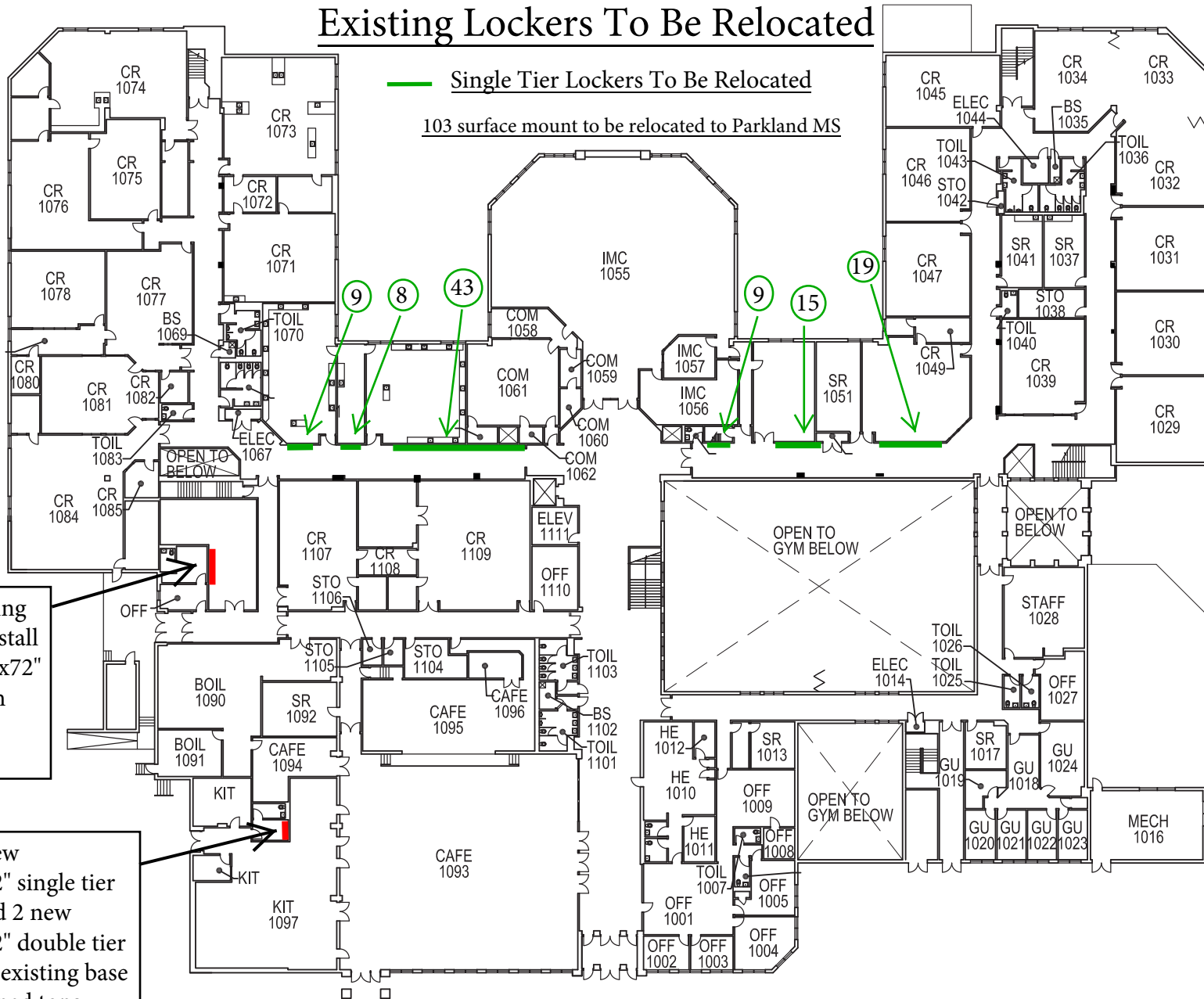


Existing Lockers To Be Relocated

— Single Tier Lockers To Be Relocated

103 surface mount to be relocated to Parkland MS



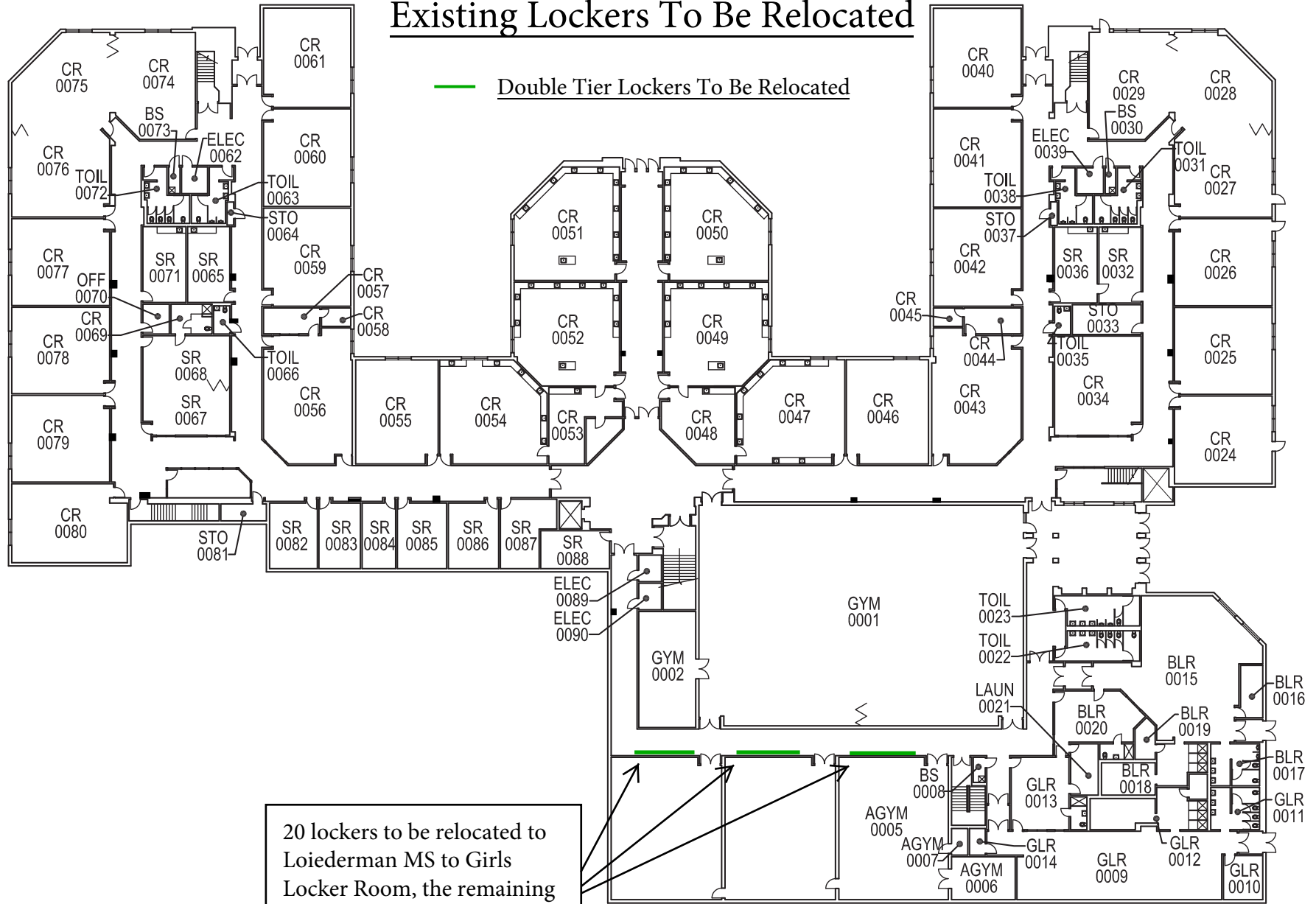
Demo 5 existing lockers and install 9 new 12"x12"x72" single tier with base and no sloped tops

Install 4 new 12"x12"x72" single tier lockers and 2 new 12"x12"x72" double tier lockers on existing base and no sloped tops

MAIN FLOOR PLAN

Existing Lockers To Be Relocated

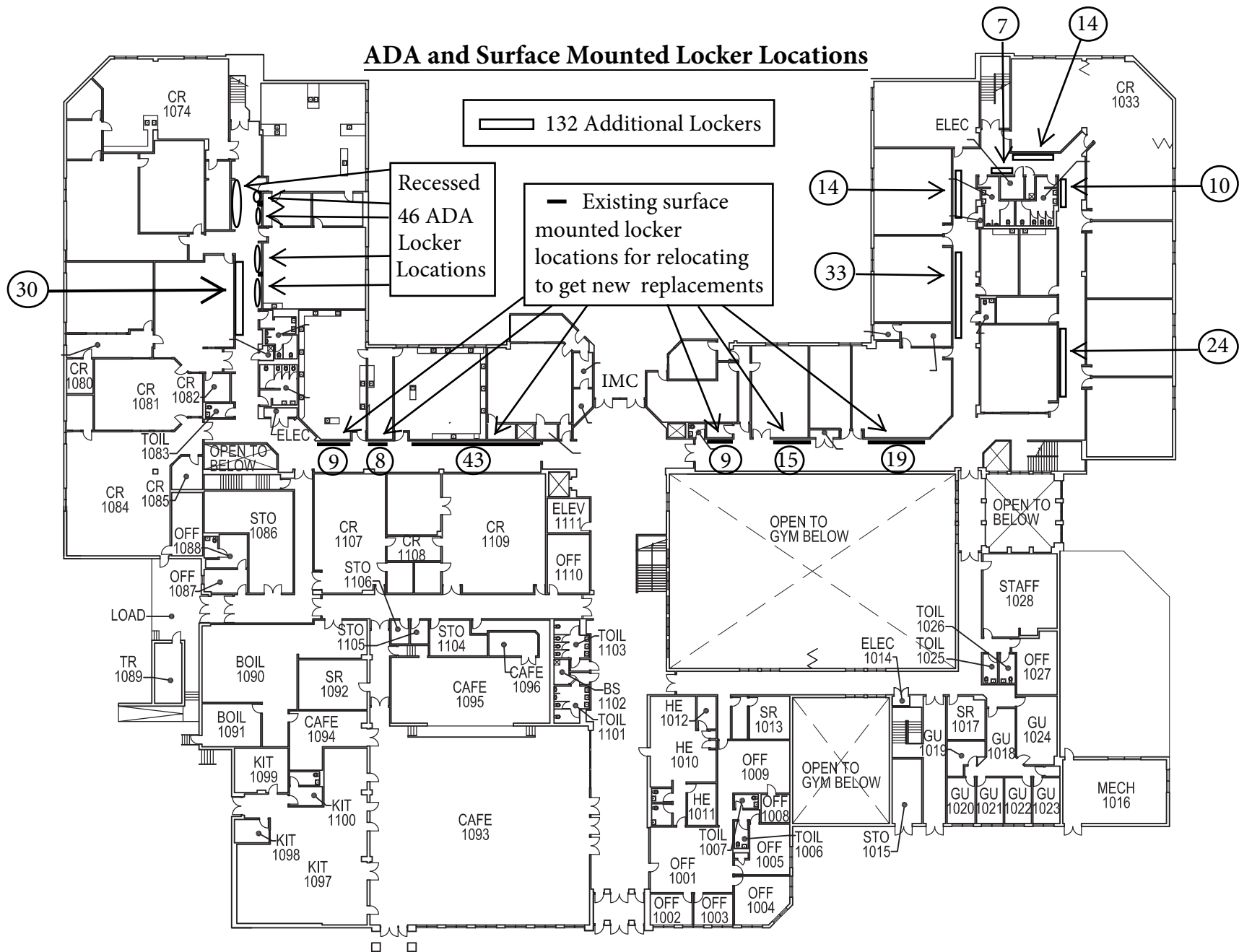
— Double Tier Lockers To Be Relocated



LOWER FLOOR PLAN

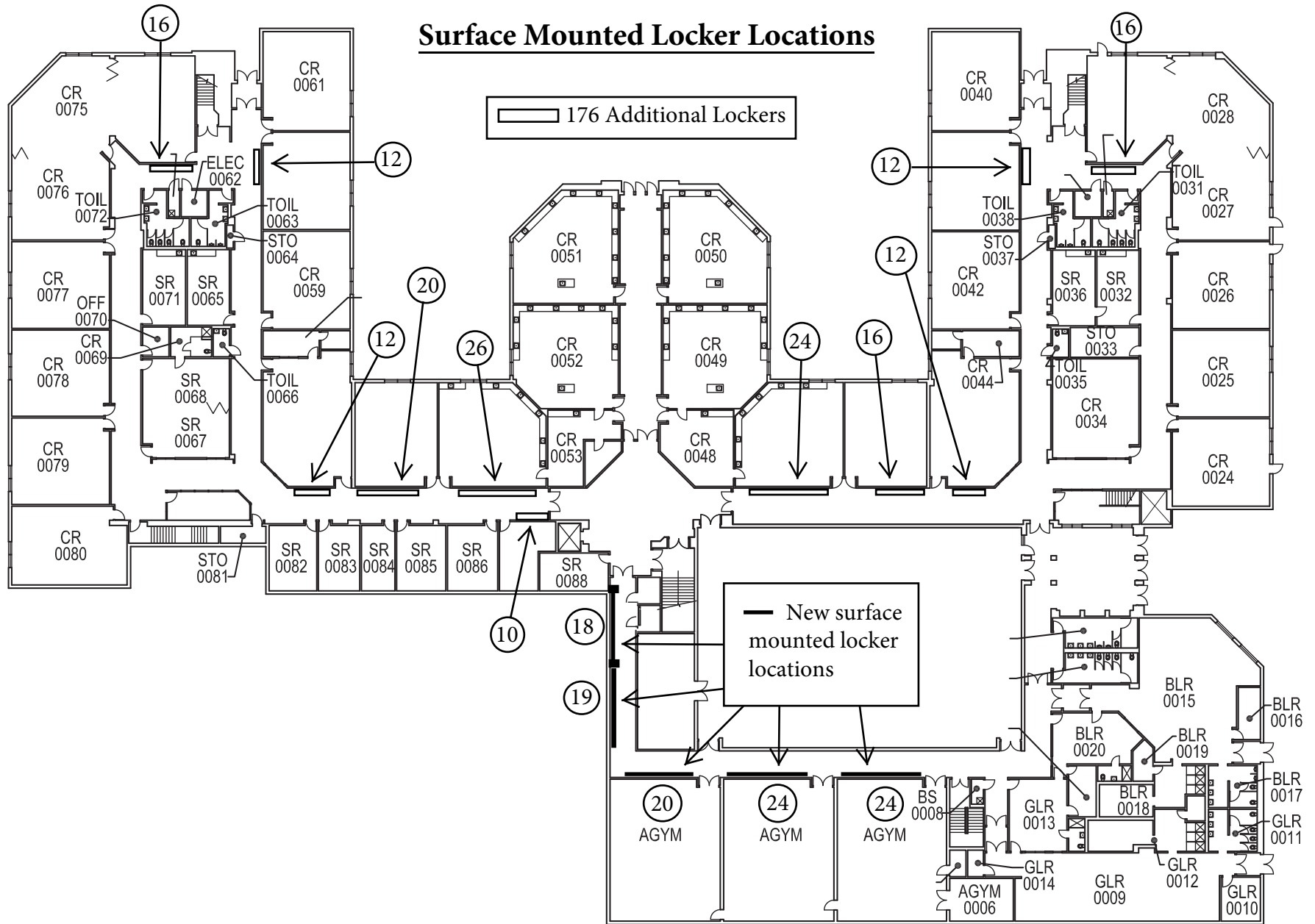
ROBERTO CLEMENTE MIDDLE SCHOOL

ADA and Surface Mounted Locker Locations



MAIN FLOOR PLAN

Surface Mounted Locker Locations



LOWER FLOOR PLAN

ROBERTO CLEMENTE MIDDLE SCHOOL

Clemente Middle School Locker Room

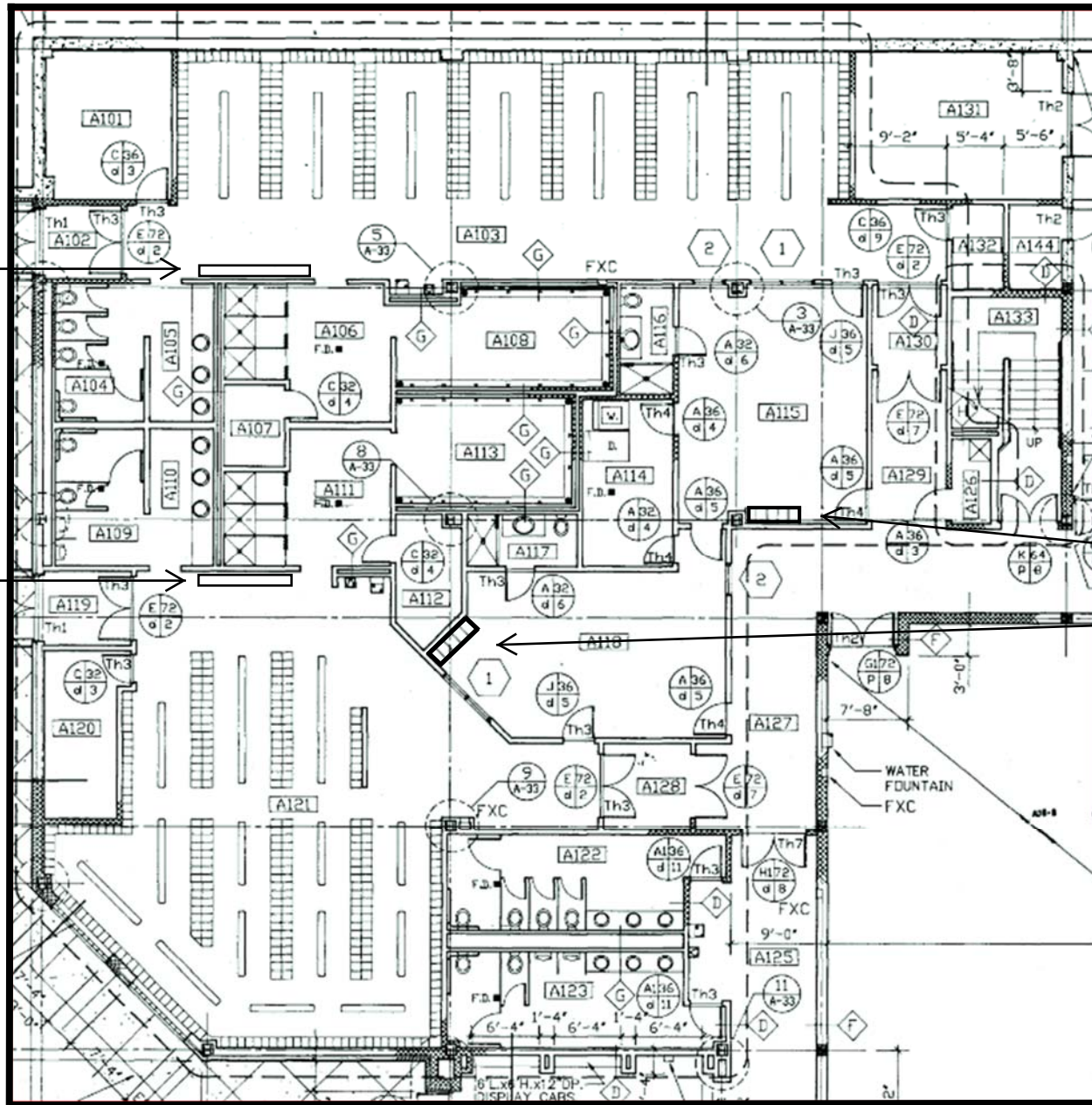
Girls Locker Room

Locker Rooms
Repalce all existing locker room lockers with 12"x12"x72" triple tier lockers on existing bases

Remove existing bench and add 10-12"x12"x72" triple tier lockers

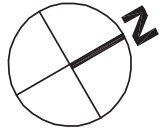
Add 9-12"x12"x72" triple tier lockers

Replace with 5 each 12"x15"x72" single tier-15" deep



Boys Locker Room

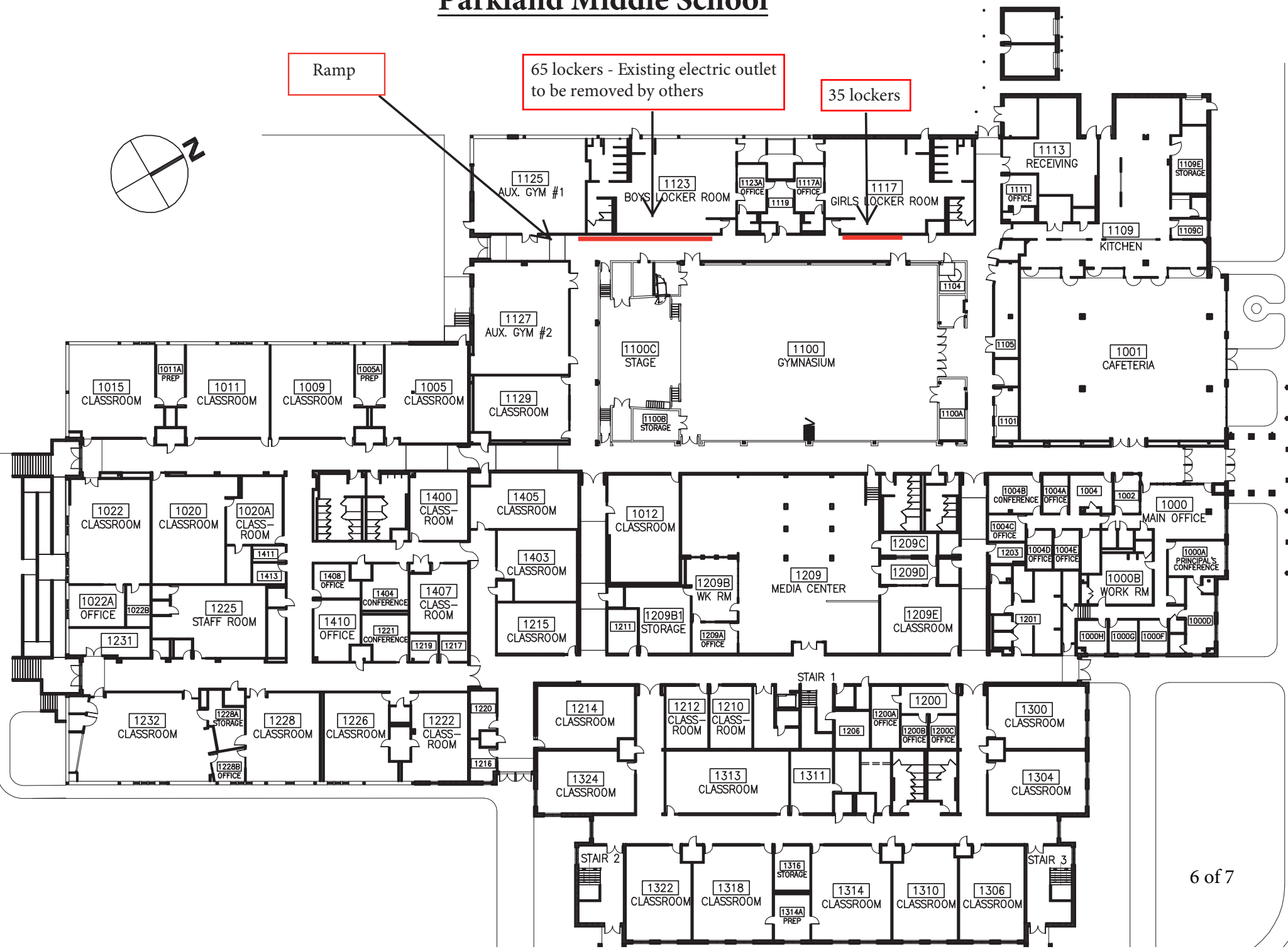
Parkland Middle School

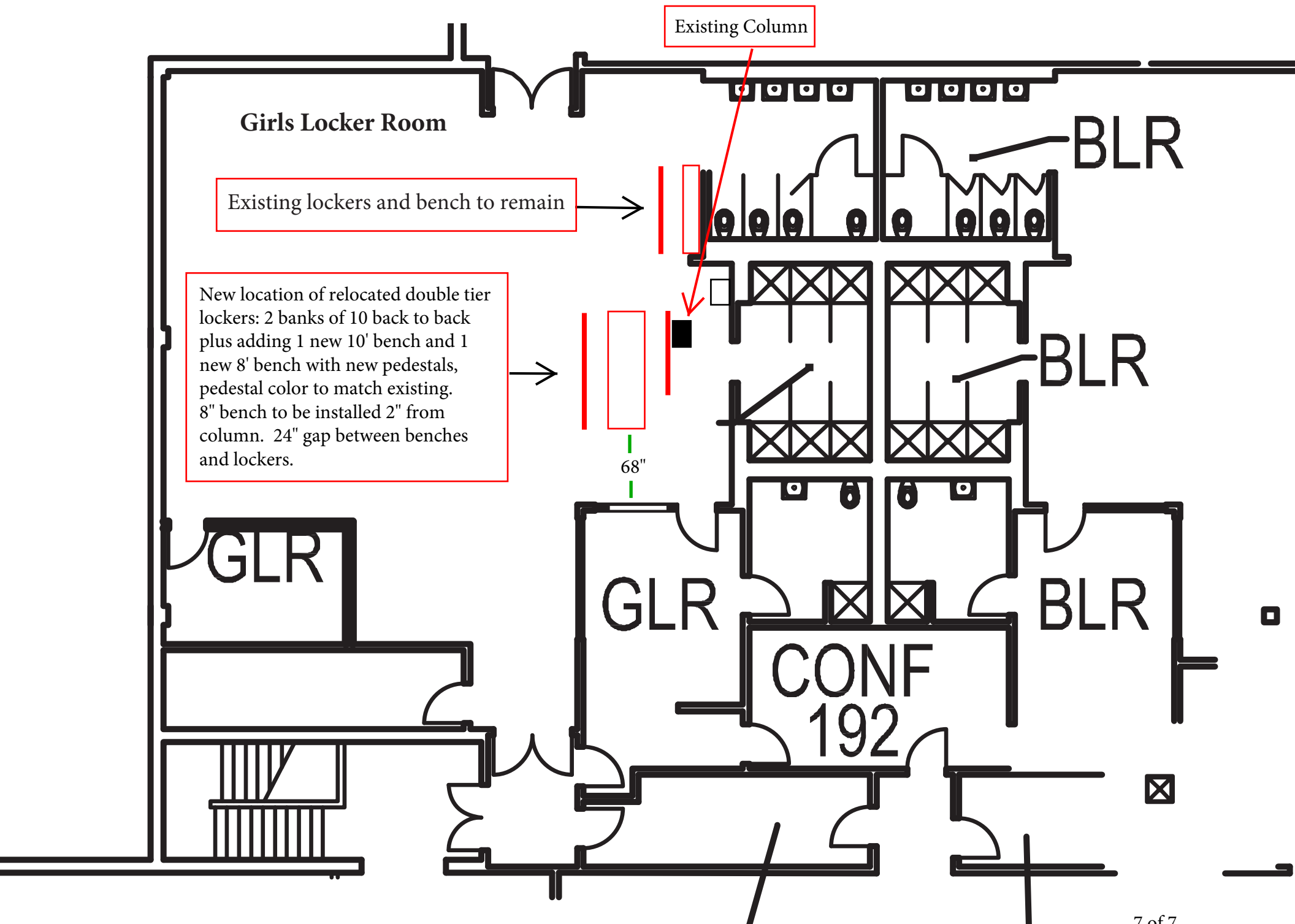


Ramp

65 lockers - Existing electric outlet to be removed by others

35 lockers





Girls Locker Room

Existing Column

Existing lockers and bench to remain

New location of relocated double tier lockers: 2 banks of 10 back to back plus adding 1 new 10' bench and 1 new 8' bench with new pedestals, pedestal color to match existing. 8" bench to be installed 2" from column. 24" gap between benches and lockers.

68"

BLR

BLR

GLR

GLR

CONF
192

BLR